

**This electronic collection of documents is provided
for the convenience of the user
and is Not a Certified Document –**

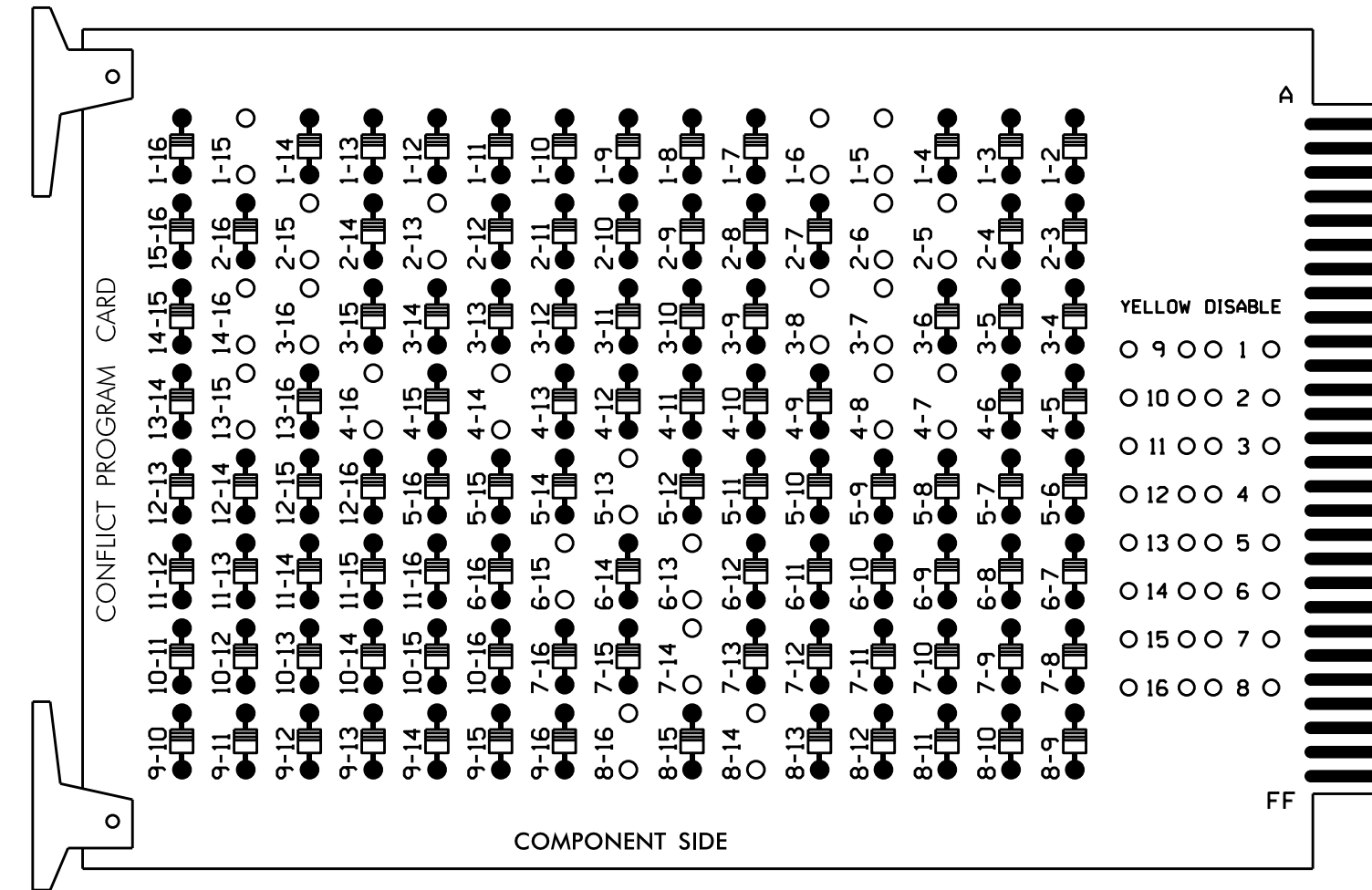
**The documents contained herein were originally issued
and sealed by the individuals whose names and license
numbers appear on each page, on the dates appearing
with their signature on that page.**

**This file or an individual page
shall not be considered a certified document.**

EDI MODEL 2010ECL-NC CONFLICT MONITOR PROGRAMMING DETAIL

(remove jumpers and set switches as shown)

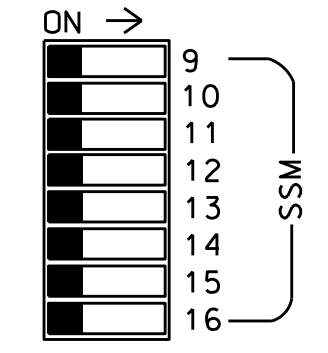
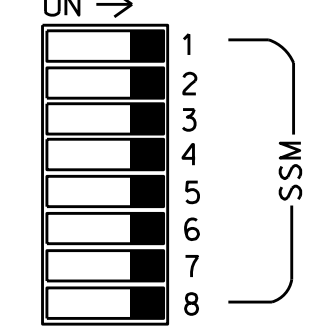
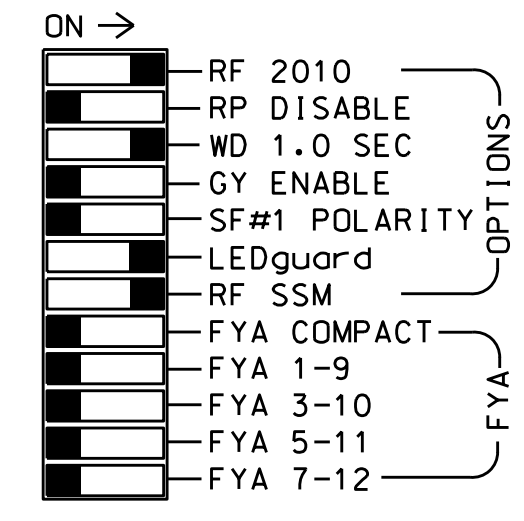
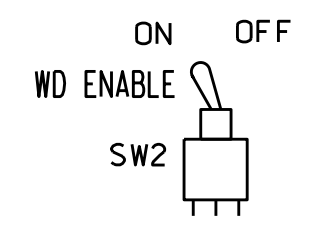
REMOVE DIODE JUMPERS 1-5, 1-6, 1-15, 2-5, 2-6, 2-13, 2-15, 3-7, 3-8, 3-16, 4-7, 4-8, 4-14, 4-16, 5-13, 6-13, 6-15, 7-14, 8-14, 8-16, 13-15 and 14-16.



REMOVE JUMPERS AS SHOWN

NOTES:

- Card is provided with all diode jumpers in place. Removal of any jumper allows its channels to run concurrently.
- Make sure jumpers SEL2-SEL5 are present on the monitor board.



■ = DENOTES POSITION OF SWITCH

NOTES

- To prevent "flash-conflict" problems, insert red flash program blocks for all unused vehicle load switches in the output file. The installer shall verify that signal heads flash in accordance with the Signal Plans.
- Ensure that Red Enable is active at all times during normal operation. To prevent Red Failures on unused monitor channels, tie unused red monitor inputs 9,10, 11,12,13,14,15 & 16 to load switch AC+ per the cabinet manufacturer's instructions.
- Program controller to start up in phases 2 and 6 green.
- Enable simultaneous gap-out feature for all phases.
- Program phases 2 and 6 for volume density operation.
- The cabinet and controller are part of the Raleigh Signal System.

EQUIPMENT INFORMATION

CONTROLLER.....2070
 CABINET.....332
 SOFTWARE.....SE-PAC2070
 CABINET MOUNT.....BASE
 OUTPUT FILE POSITIONS...12
 LOAD SWITCHES USED.....S1,S2,S2P,S3,S4,S4P,S5,S6,S6P,S7,S8,S8P
 PHASES USED.....1,2,2 PED,3,4,4 PED,5,6,6 PED,7,8,8 PED
 OVERLAPS.....NONE

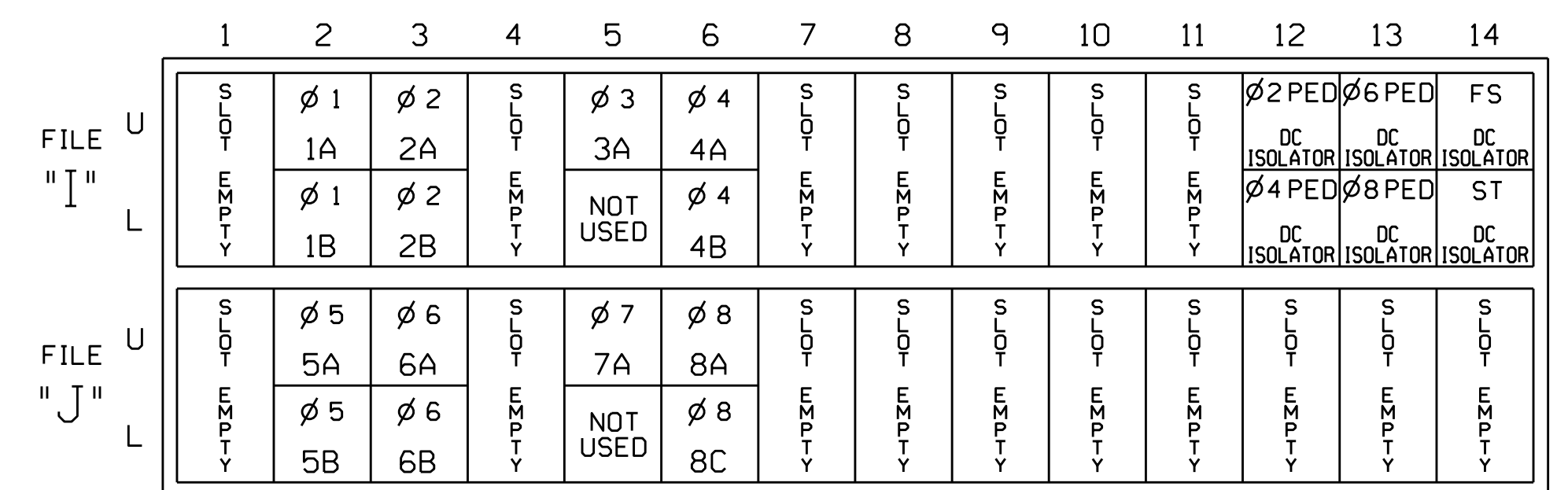
SIGNAL HEAD HOOK-UP CHART

LOAD SWITCH NO.	S1	S2	S2P	S3	S4	S4P	S5	S6	S6P	S7	S8	S8P		
PHASE	1	2	2 PED	3	4	4 PED	5	6	6 PED	7	8	8 PED		
SIGNAL HEAD NO.	11	82	21,22	P21, P22	31	41,42, 43	P41, P42	42	51	61,62	P61, P62	71	81,82	P81, P82
RED			128		101					134		107		
YELLOW			129		102					135		108		
GREEN			130		103					136		109		
RED ARROW	125				116					131		122		
YELLOW ARROW	126	126			117			132	132			123		
GREEN ARROW	127	127			118			133	133			124		
Hand icon					113			104				119		110
Walking person icon					115			106				121		112

NU = Not Used

INPUT FILE POSITION LAYOUT

(front view)



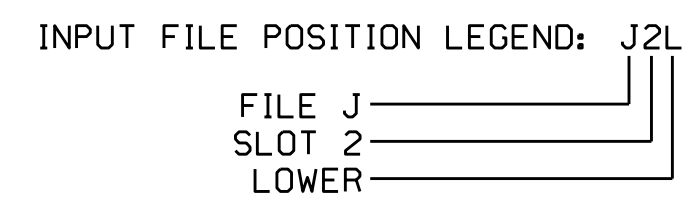
EX.: 1A, 2A, ETC. = LOOP NO.'S

FS = FLASH SENSE
 ST = STOP TIME

INPUT FILE CONNECTION & PROGRAMMING CHART

LOOP NO.	LOOP TERMINAL	INPUT FILE POS.	PIN NO.	DETECTOR NO.	NEMA PHASE	DELAY TIME	EXTEND (STRETCH) TIME
1A	TB2-5,6	I2U	39	3	1	3	
1B	TB2-7,8	I2L	43	4	1	15	
2A	TB2-9,10	I3U	63	5	2		
2B	TB2-11,12	I3L	76	6	2		
3A	TB4-5,6	I5U	58	9	3	3	
4A	TB4-9,10	I6U	41	11	4	100	3,4
4B	TB4-11,12	I6L	45	12	4		
5A	TB3-5,6	J2U	40	21	5		
5B	TB3-7,8	J2L	44	22	5	15	
6A	TB3-9,10	J3U	64	23	6		
6B	TB3-11,12	J3L	77	24	6		
7A	TB5-5,6	J5U	57	29	7	3	
8A	TB5-9,10	J6U	42	31	8	100	3,4
8C	TB5-11,12	J6L	46	32	8		
PED PUSH BUTTONS							
P21,P22	TB8-4,6	I12U	67	PED 2	2 PED		
P41,P42	TB8-5,6	I12L	69	PED 4	4 PED		
P61,P62	TB8-7,9	I13U	68	PED 6	6 PED		
P81,P82	TB8-8,9	I13L	70	PED 8	8 PED		

NOTE:
 INSTALL DC ISOLATORS IN INPUT FILE SLOTS I12 AND I13.



COUNTDOWN PEDESTRIAN SIGNAL OPERATION

Countdown Ped Signals are required to display timing only during Ped Clearance Interval. Consult Ped Signal Module user's manual for instructions on selecting this feature.

THIS ELECTRICAL DETAIL IS FOR THE SIGNAL DESIGN: 05-0470
 DESIGNED: May 2021
 SEALED: 5/24/2021
 REVISED: N/A

Electrical Detail

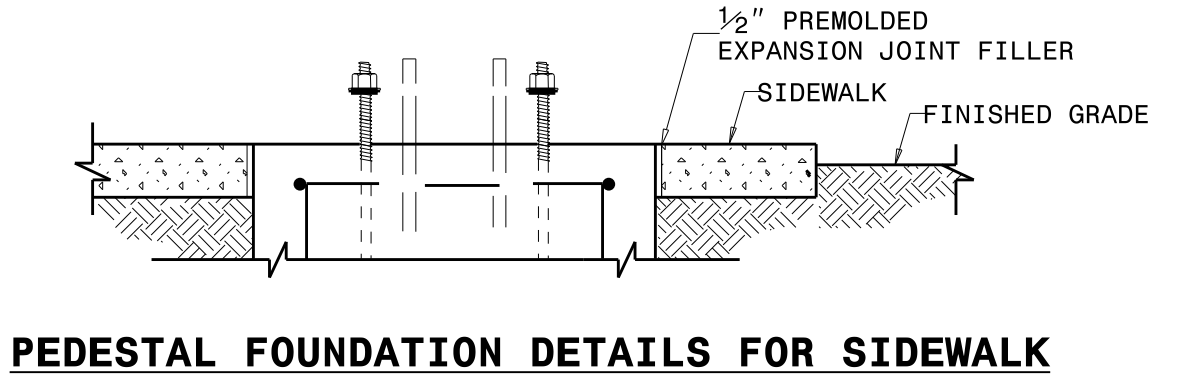
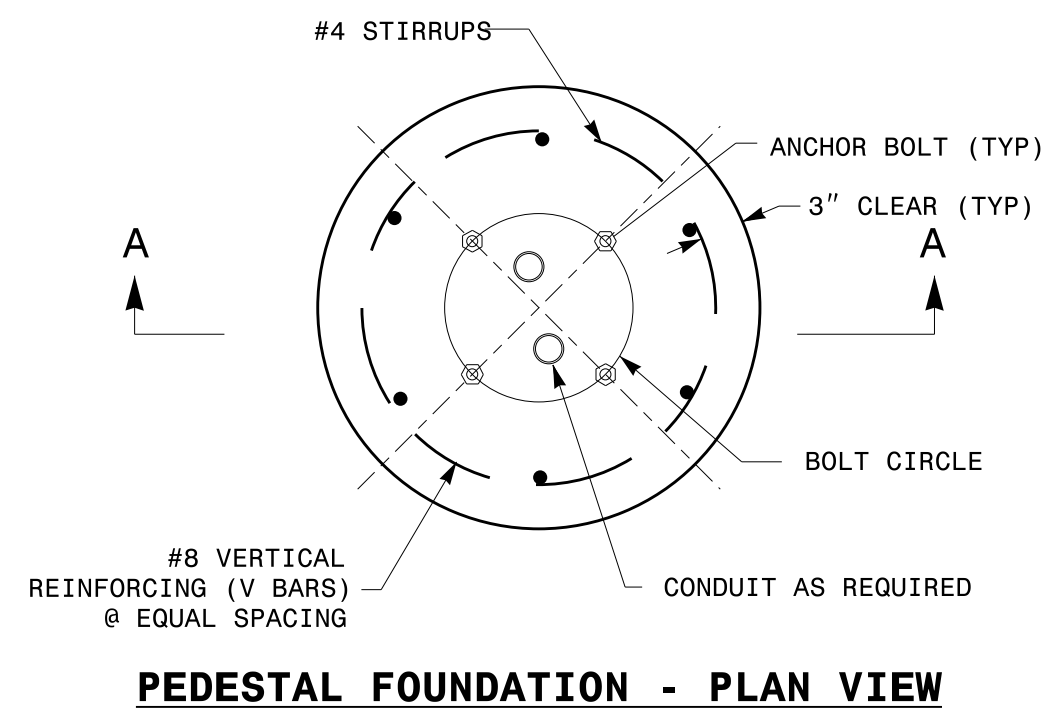
Electrical and Programming Details for:
 Prepared in the Offices of:

 750 N. Greenfield Pkwy, Garner, NC 27529

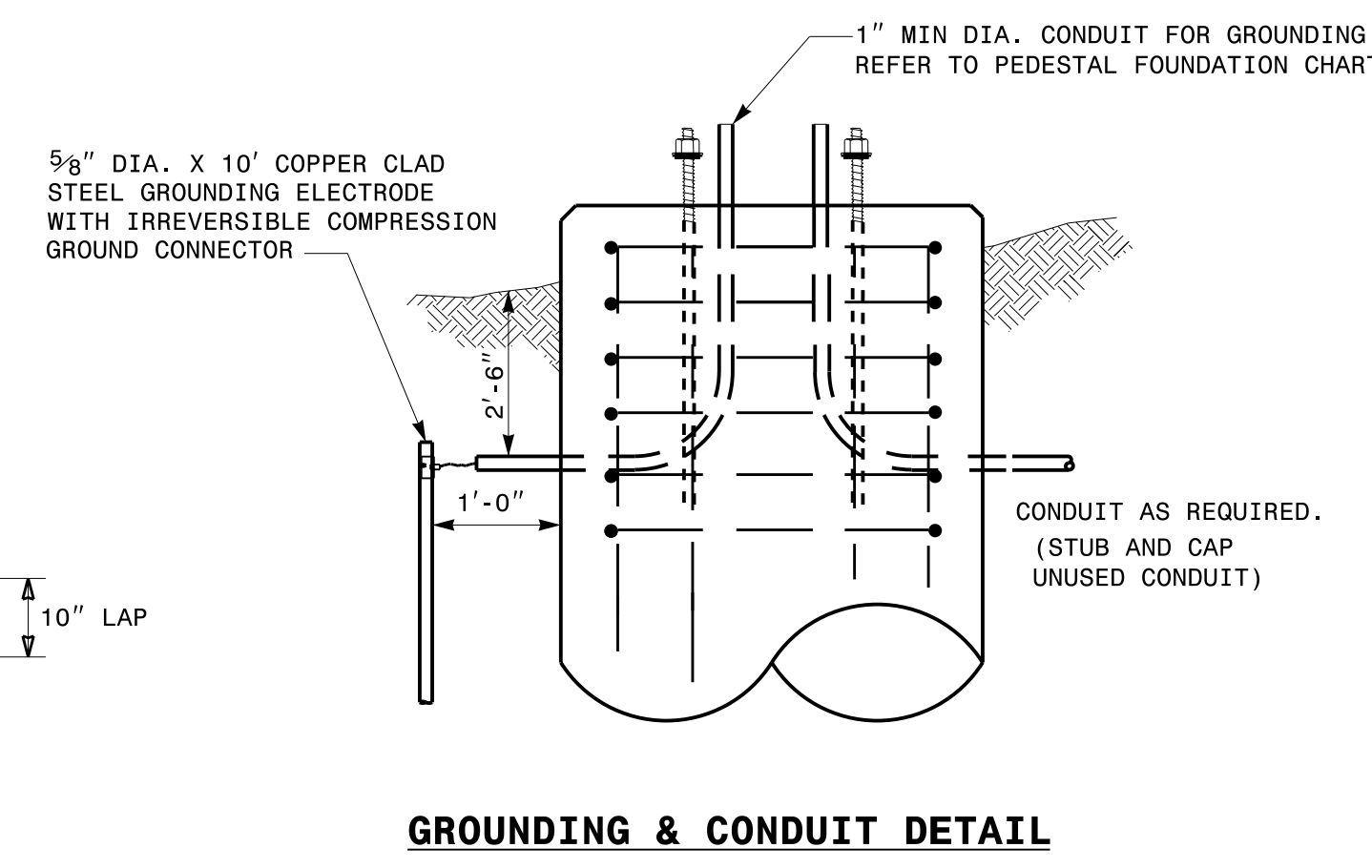
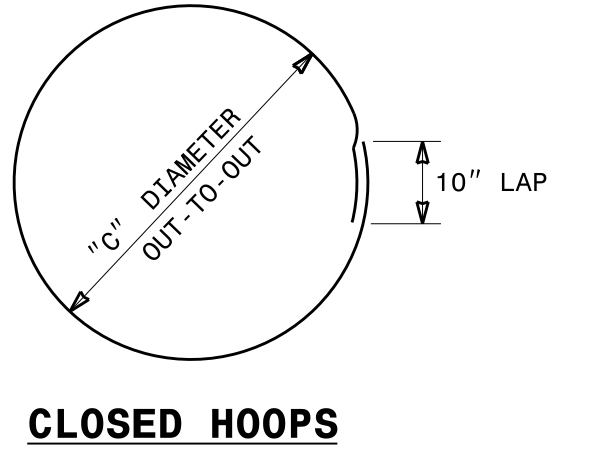
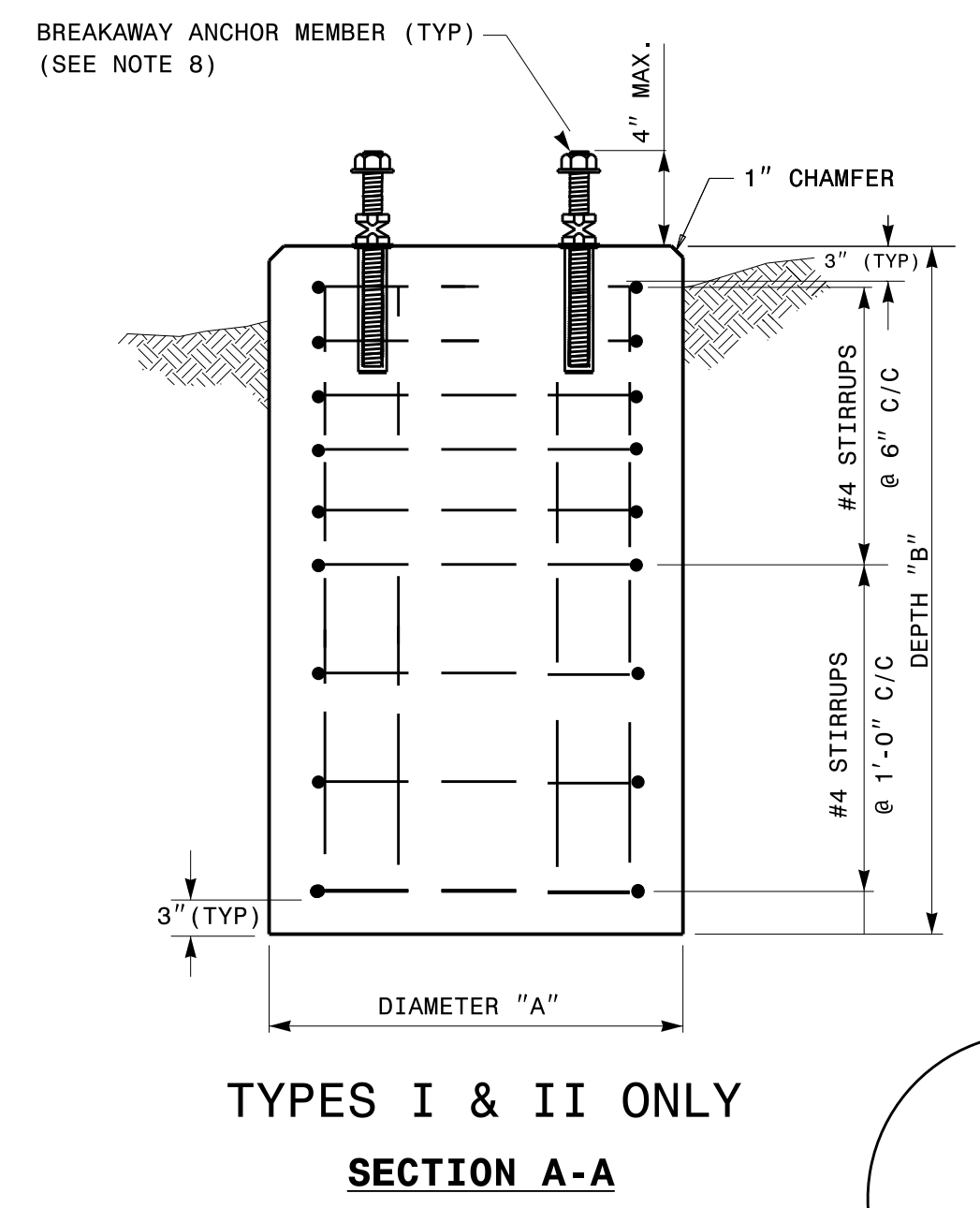
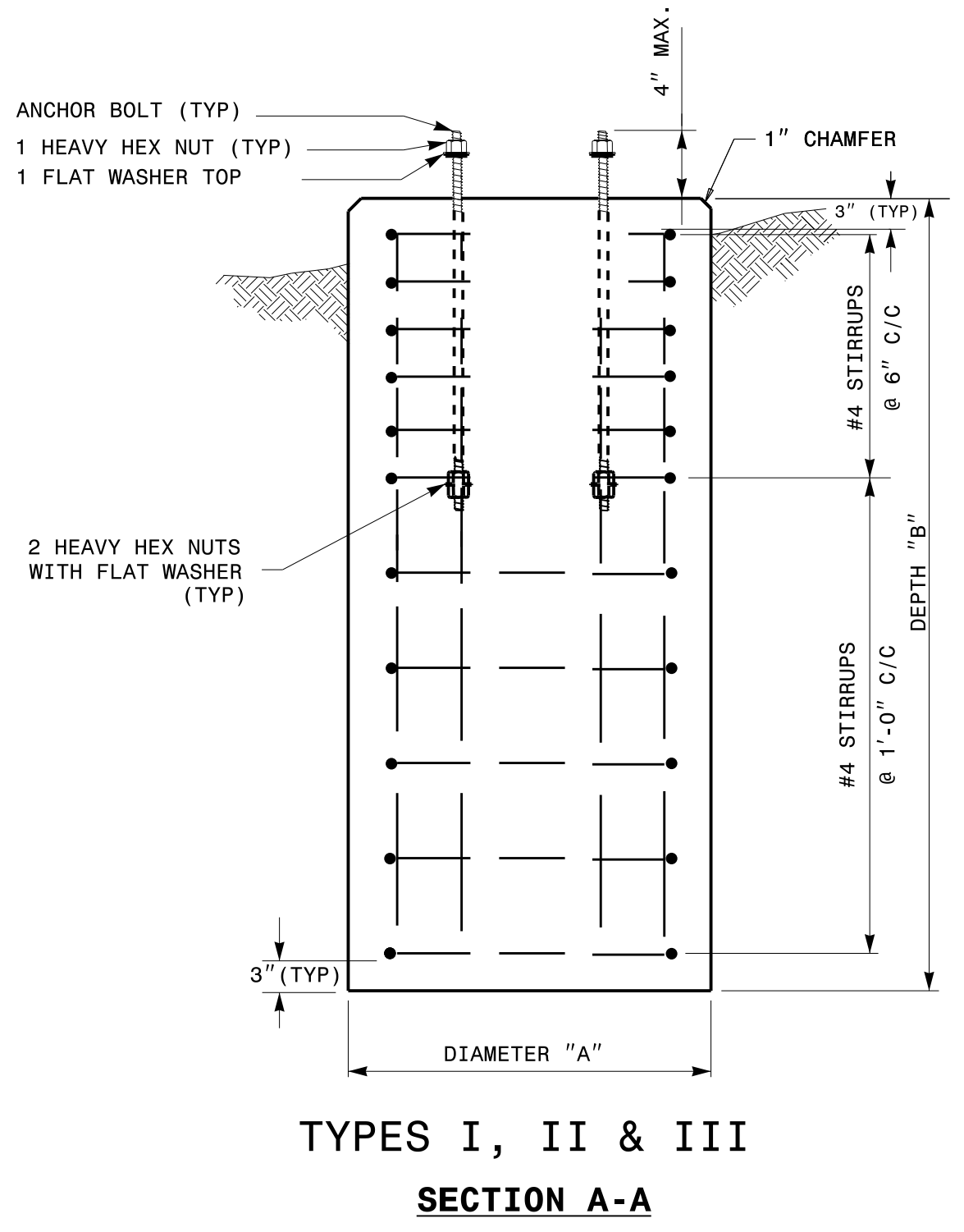
SR 1827/2015 (Lynn Road) at SR 1820 (Lead Mine Road)	
Division 5	Wake County Raleigh
PLAN DATE: May 2021	REVIEWED BY:
PREPARED BY: S. Armstrong	REVIEWED BY:
REVISIONS	INIT. DATE
DocuSigned by: Ryan W. Hough	5/27/2021
SIG. INVENTORY NO. 05-0470	DATE

DOCUMENT NOT CONSIDERED FINAL UNLESS ALL SIGNATURES COMPLETED

SEAL
 NORTH CAROLINA PROFESSIONAL ENGINEER
 SEAL 036833
 RYAN W. HOUGH
 5/27/2021



- NOTES:**
- CAST FOUNDATION AGAINST UNDISTURBED SOIL WHEREVER CONDITIONS PERMIT. IN UNSTABLE SOIL, CAST-IN-PLACE TUBE FORMS ARE ALLOWED WITH APPROVAL.
 - COMPLY WITH APPLICABLE PROVISIONS OF SECTION 825 FOR CONCRETE CONSTRUCTION.
 - USE CLASS "A" CONCRETE THAT MEETS THE REQUIREMENTS OF SECTION 1000 WITH A COMPRESSION STRENGTH AT 28 DAYS OF $F'c = 3000$ PSI (MIN.).
 - USE ASTM GRADE 60 DEFORMED BARS FOR ALL REINFORCING STEEL.
 - GRADE IS ASSUMED TO BE (8H:1V) OR FLATTER. FOUNDATION SIZE AND DEPTHS ARE BASED ON THE FOLLOWING SOIL DESIGN PARAMETERS:
 - SANDY TYPE SOIL
 - NO GROUND WATER WITHIN 5'-0" OF SURFACE ELEVATION
 - WIND SPEED NOT TO EXCEED 140 MPH
 IF ACTUAL CONDITIONS VARY SUBSTANTIALLY FROM THOSE ASSUMED, THE FOUNDATION DEPTH MAY BE ADJUSTED. IN THIS CASE, CONTACT THE ENGINEER.
 - MAINTAIN AT LEAST 3" COVER ON ALL REINFORCEMENT.
 - ORIENT CONDUIT AS REQUIRED BY THE DESIGN OR AS DICTATED BY FIELD CONDITIONS.
 - USE ADHESIVE ANCHOR FOR THREADED COUPLING INSERT. FOR TYPE I MINIMUM DEPTH NECESSARY IS 0'-4 1/2" AND FOR TYPE II MINIMUM DEPTH NECESSARY IS 0'-6 5/8". FOLLOW MANUFACTURER'S INSTALLATION INSTRUCTIONS.



PEDESTAL FOUNDATION TYPE AND SIZE							
TYPE	PEDESTAL DESCRIPTION	SIZE			ANCHOR BOLT		INSTALL GROUNDING SYSTEM (YES/NO)
		DIAMETER "A" FT	DEPTH "B" FT	CONCRETE VOLUME CY	DIAMETER (MIN.) IN	LENGTH FT-IN	
I	PEDESTRIAN PUSHBUTTON	2'-0"	3'-6"	.41	1/2	1'-6"	NO
II	NORMAL-DUTY	2'-0"	5'-0"	.58	3/4	2'-0"	YES
III	HEAVY-DUTY	2'-6"	7'-0"	1.27	1	4'-0"	YES

REINFORCING STEEL SCHEDULE												
TYPE	V-BAR				STIRRUP							
	SIZE #	QTY	LENGTH	WEIGHT LBS	QUANTITY			LENGTH	DIAMETER "C" FT	OVERLAP MIN.	WEIGHT LBS	TOTAL STEEL WEIGHT LBS
					VERTICAL ON 6" CENTERS	ON 12" CENTERS	TOTAL					
I	8	6	3'-0"	56	4	0	4	5'-7"	1'-6"	0'-10"	15	71
II	8	6	4'-6"	86	4	5	3	5'-7"	1'-6"	0'-10"	30	116
III	8	6	6'-6"	122	4	7	4	7'-2"	2'-0"	0'-10"	53	175

STATE OF NORTH CAROLINA
 DEPT. OF TRANSPORTATION
 DIVISION OF HIGHWAYS
 RALEIGH, N.C.

ENGLISH STANDARD DRAWING FOR
PEDESTALS
 FOUNDATIONS

SHEET 1 OF 1
1743D01

11-10-2017 08:03
 U:\2018 S14 Drawings\Plate Sheets\2018_Plate Sheet - .dgn
 r:\rough

DOCUMENT NOT CONSIDERED
 FINAL UNLESS ALL
 SIGNATURES COMPLETED

See Plate for Title

